



## PRESIDENT'S MESSAGE

Dear ANA Members,

It was a pleasure connecting with those of you who attended the ANA's Annual Meeting in Baltimore where we also celebrated our 150<sup>th</sup> anniversary. The first ANA meeting was held in 1875 at the Y.M.C.A. Hall on the corner of Fourth and Twenty-third Street in New York City. Please refer to [this video](#) for more information about the ANA's history.

I would like to thank Dr. M. Elizabeth Ross for her leadership and the accomplishments during her term as President of ANA from 2023-2025. It is my honor to follow in Betsy's footsteps as President of ANA for the next two years.

Looking ahead, we would like to see the ANA continue inspire students, fellows, and junior faculty to become involved in research, facilitate joint projects with biopharma to expand precision neurology across academic departments, as well as seek additional funding opportunities to support academic initiatives in neurology.

At ANA2025, we heard about cutting edge research, experienced exceptional educational programming, recognized distinguished research, inspired junior and early career members, and enjoyed connecting with colleagues and friends from academic neurology departments around the world. The Annual Meeting included the Executive Session of Membership where we elected new officers and directors. I would like to congratulate my colleagues who will be serving on the ANA Board of Directors:

- S. Thomas Carmichael, MD, PhD, FANA, University of California, Los Angeles | President-Elect
- David Greer, MD, FANA, Boston | Treasurer-Elect
- Lesli Skolarus, MD, MS, FANA, Northwestern University | Secretary (*second term*)
- Jayant Acharya,
- Laurie Gutmann,
- Michelle Johansen,
- Sarah Berth,

It is not too early to begin planning to join us for ANA2026 next year in San Diego. Mark your calendar for October 17–20, 2026, and make plans to join us. We look forward to continued success for the ANA and to the

advancements in academic neurology. I welcome your insight, feedback, and ideas to enhance ANA programs and member services.

Sincerely,

Dimitri Krainc, MD, PhD, FANA  
President, American Neurological Association  
Chairman, Davee Department of Neurology  
Director, Feinberg Neuroscience Institute  
Aaron Montgomery Ward Professor  
Northwestern University Feinberg School of Medicine

## MEET THE ANA2025 EMERGING SCHOLARS

Established in 2020, the Emerging Scholars program highlights the innovative, cutting-edge research of junior and early career academic neurologists and neuroscientists. Each year, authors of top-scoring abstracts are selected by the Annual Meeting Programming (AMP) Committee and Plenary Session Chairs to share their work during a plenary session at the Annual Meeting.

Please join us in celebrating this year's outstanding awardees!



**Patrick Lawlor, MD,  
PhD**

Mott Children's Hospital  
at the University of  
Michigan

*A Novel Mechanism of  
Temperature-sensitive  
Seizures*



**Vidith Phillips, MD, MS**

St. Jude's Children's  
Research Hospital  
*Assessing Healthcare  
Utilization and Social  
Drivers of Health in  
Young Stroke Patients of  
Maryland*



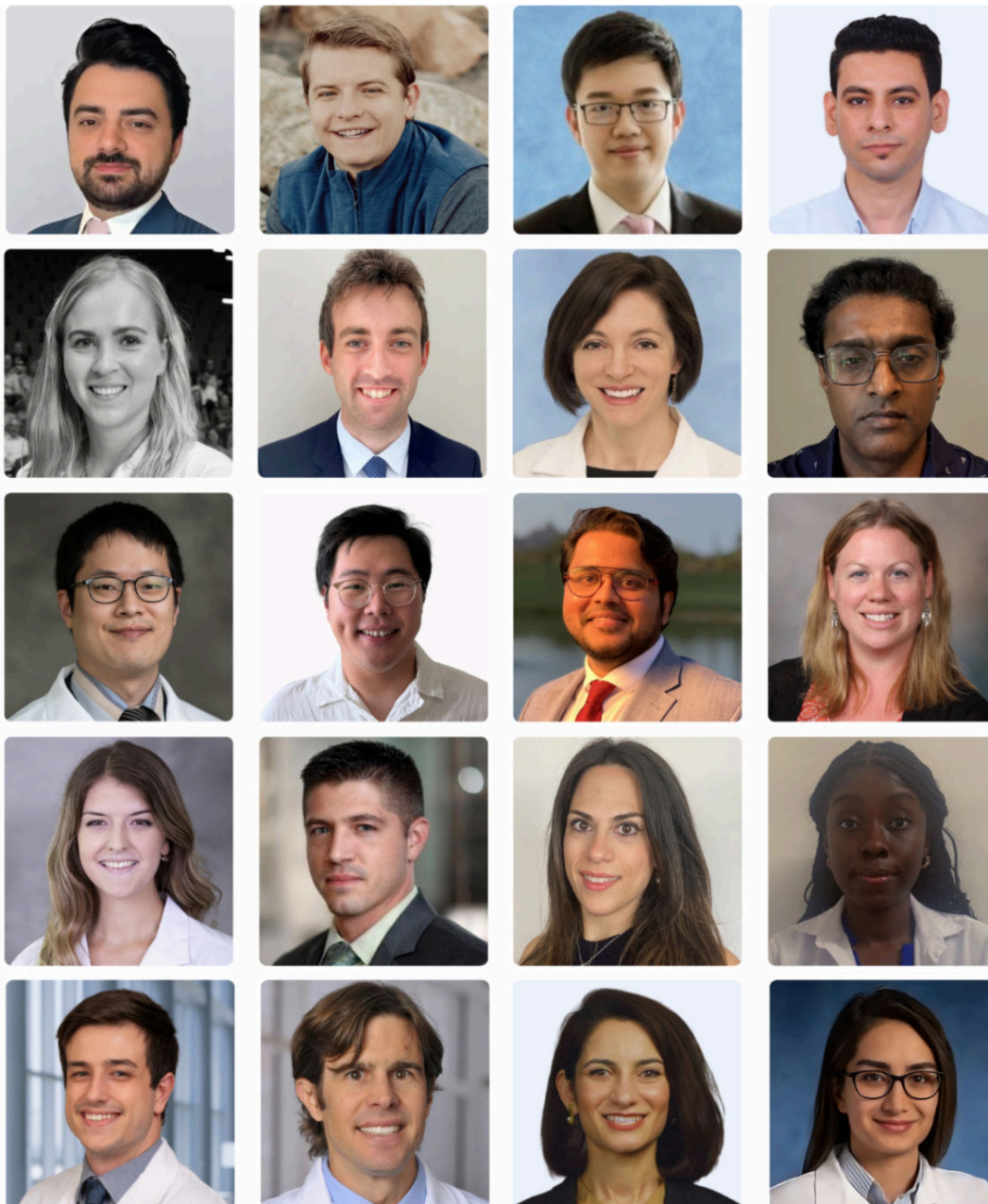
**Antonia Schonwald,  
MS**

New York Medical  
College  
*The Effect of Sigma-1  
Receptor Agonism in Rat  
Model of Infantile  
Epileptic Spasm  
Syndrome*

## MEET THE ANA2025 POSTER AWARD WINNERS

With nearly 500 posters presented at ANA2025, attendees had the chance to explore an incredible range of groundbreaking science. We thank all of the poster presenters for sharing their research and helping make this year's meeting a success.

Please join us in celebrating this year's Poster Award winners!



*Photos shown above correspond, in order, to the list below, starting at the top left.*

- Yagiz Altun, MD, PhD (Albert Einstein College of Medicine) | *Cortical Interneuron Imbalance in Huntington's Disease: Implications for Therapeutic Strategies to Correct Developmental Critical Period and Circuit Disruptions*
- David Camacho, BS (Georgia Institute of Technology) | *Predicting Alzheimer's Disease Progression Using Machine Learning and Cerebrospinal Fluid Proteomics*
- Huanwen Chen, MD (Georgetown University Hospital) | *Acute Stroke Reperfusion Therapies for Down Syndrome Patients: Nationwide Utilization Rates and Hospitalization Outcomes*
- Mohamed Doheim, MD (University of Pittsburgh School of Medicine) | *Intravenous Thrombolysis in Minor Acute Ischemic Stroke: A Comprehensive Meta-Analysis of Randomized Controlled Trials*
- Laerke Duerlund, MD (Johns Hopkins University) | *Clinical Characteristics and Outcome of Infectious Encephalitis in Denmark: A Population-based Cohort Study*
- Michael Gilligan, MB BCh BAO (Mayo Clinic) | *Unclassified Neural IgGs: Immune Profiling Algorithm to Characterize Autoimmune Synaptic*

## Biomarkers

- Chloe Hill, MD, MS (University of Michigan) | *Access to Expert Pregnancy Care for Women with Epilepsy*
- Chelva Janarthanam, MPH (University of Georgia) |  *$\alpha$ -synuclein Seed Amplification Assay as a Diagnostic Tool Across Diverse Biomatrices from Autopsy-confirmed Incidental Lewy Body Disease and Parkinson's Disease*
- Dae-Gyu Jang, PhD (University of Michigan) | *Development and Integration of Polyexposure Scores to Assess Environmental Risk in Amyotrophic Lateral Sclerosis*
- Pengyu Kan, BS (Johns Hopkins University) | *Multiview Transformer for Brain Age Prediction*
- Naga Pradyumna Kothapalli, MBBS (Mayo Clinic Health System) | *Late-Onset Neurological Complications of Immune Checkpoint Inhibitors*
- Reghann LaFrance-Corey, MS (Mayo Clinic) | *A Novel Mouse Model for Studying Immune-Mediated Rippling Muscle Disease Through Cavin-4 Peptide Immunization*
- Aslyn Mattson, BS, BA (Florida Atlantic University) | *Dimorphic Protease-activated Receptor Genotype is Associated with Improved Stroke Outcomes in a Biracial Population*
- Christopher McGraw, MD, PhD (Northwestern University) | *Investigating the Role of Polygenic Risk in the Severity of Focal Epilepsy*
- Georgia Minakaki, MSc, PhD (Northwestern University) | *Commander Complex Regulates Lysosomal Function and is Implicated in Parkinson's Disease Risk*
- Priscilla Abrafi Opare-addo, MD, MWACP (Komfo Anokye Teaching Hospital) | *Neuregulin 1 as a Predictor of Severity and Outcome among Patients with Acute Intracerebral Hemorrhage in a Ghanaian Hospital*
- Nil Saez Calveras, MD (UT Southwestern) | *A Rapid Tau Biosensor System Reliably Classifies Tau Amyloid Assemblies in Tauopathies*
- Andrew Sas, MD, PhD (Ohio State University) | *Age Related Changes Impair Neutrophil Plasticity and Regeneration After Optic Nerve Trauma*
- Banafsheh Shakibajahromi, MD, MPH (University of Pennsylvania) | *Segmental Cerebral Blood Flow Changes in Aging and Cerebral Small Vessel Disease*
- Fatemeh Siavoshi, MD (Johns Hopkins University) | *Accelerated Metabolomic Aging and Its Association with Social Determinants of Health in Multiple Sclerosis*



## ANA INVESTIGATES: CELEBRATING 150 YEARS AT ANA2025

The ANA's 150th Annual Meeting in Baltimore marked a historic milestone, celebrating a century and a half of discovery and progress in neurology and neuroscience. With nearly 500 posters, dynamic plenary sessions, workshops, and networking opportunities, ANA2025 showcased the very best of academic neurology.

Dr. Michelle Johansen of Johns Hopkins University captured attendee highlights and reflections through interviews from the meeting floor, offering a glimpse into the energy and enthusiasm of the event. From the Presidential Symposium to the closing sessions, ANA2025 was a celebration of science, community, and 150 years of impact! Listen to the [latest episode of ANA Investigates](#) to hear Dr. Johansen's conversations with attendees, and experience ANA2025 through their perspectives.

## HEAR FROM ANA2025 ATTENDEES

**ANA2025** ✨  
150<sup>th</sup> ANNUAL MEETING  
#ANA2025 | 2025.myana.org

**RECORDINGS AVAILABLE NOW**  
**START LISTENING**  
Free for Full-Meeting Attendees  
\$50 for ANA Members · \$99 for Non-Members



### ANA2025 RECORDINGS PACKAGE NOW AVAILABLE

Missed a session at ANA2025? Recordings from the six main symposia are [now available online](#), covering the latest advances across neurologic diseases. Registered full-meeting attendees can access them at no cost, ANA members who did not register may purchase access for \$50, and non-members can purchase access for only \$99.

To access the recordings, please visit the [ANA's OnDEC system](#). If you have any questions about obtaining access to the sessions, please [contact Jen Hurley](#), the ANA's Education & Accreditation Manager.

The American Neurological Association is accredited by the Accreditation Council for Continuing Medical Education (ACCME) to provide continuing medical education for physicians.

The American Neurological Association designates this live activity for a maximum of 8.0 AMA PRA Category 1 Credits™. Physicians should claim only the credit commensurate with the extent of their participation in the activity.

## LISTEN NOW



**Gene Therapy**

### ANA HIGHLIGHTS GENE THERAPY COURSE

Gene therapy is transforming the field, and the [ANA Highlights Gene Therapy Course](#) gives you insider access to the latest breakthroughs. This four-part

video series covers adeno-associated virus, antisense oligonucleotides, and CRISPR, capped with a panel discussion on real-world applications.

Chaired by Dr. M. Elizabeth Ross and Dr. Bryan Traynor, the program brings together top experts leading the charge in gene-based therapies. Free for ANA members and just \$49 for non-members, this course is a must-share with colleagues! Participants can also earn up to 1.5 *AMA PRA Category 1 Credits™*.

To access the course, first [log in to your ANA account](#). Once logged in, click the link below to be taken directly to the course page.

## EXPLORE GENE THERAPY

Annals of  
NEUROLOGY

An Official Journal of the  
American Neurological  
Association & the  
Child Neurology Society

ANA  
AMERICAN  
NEUROLOGICAL  
ASSOCIATION®  
THE HOME FOR ACADEMIC NEUROLOGY



### ANNALS OF NEUROLOGY MEMBER HIGHLIGHTS

Gain inspiration and insight from articles by ANA members:

- [Cross-Sectional FDG in Down Syndrome and Autosomal Dominant Alzheimer's Disease](#)
- [Clinical and Molecular Genetic Characterization of Landau Kleffner Syndrome: An Observational Cohort and Experimental Study](#)
- [Predictive Value of Plasma Biomarkers in Tau-PET Transitions](#)
- [A Distinct Immunological Signature in Late-Onset Myasthenia Gravis: Insights from an Exploratory Proteomics Study](#)

### DID YOU KNOW? ANNALS OFFERS ANA FELLOWS ONE GUARANTEED EXTERNAL REVIEW PER YEAR!

[Annals of Neurology](#) is one of the world's most prestigious medical publications, featuring high-impact clinical and basic research in neurology and neuroscience. With an Impact Factor of 7.7, *Annals* has a long-standing reputation for excellence and is widely recognized by leaders in the field.

As an ANA Fellow, you are entitled to [one external review per year](#) for a manuscript submitted to *Annals*. If you are the first, senior, or corresponding author, you will have the option to request this guaranteed review during submission. Be sure your [membership is current](#) to take advantage of this exclusive benefit!

## Get expert career advice tailored for neurology professionals, from refining your job search to acing interviews.

Unlock your potential with the ANA Career Center resources today!



### ANA CAREER CENTER: CONNECTING EMPLOYERS & JOB SEEKERS

Are you an [employer](#) recruiting for an open position? Are you an [individual seeking employment](#) to fit your skills, experience, and talent? The [ANA Career Center](#) is an outstanding resource for both employers and job seekers.

#### EMPLOYERS

- **EMAIL** your job directly to job seeking professionals
- **PLACE** your job in front of our highly qualified members
- **SEARCH** our resume database of qualified candidates
- **MANAGE** jobs and applicant activity right on our site
- **LIMIT** applicants only to those who are qualified
- **FILL** your jobs more quickly with great talent

#### JOB SEEKERS

- **POST** multiple resumes and cover letters or choose an anonymous career profile that leads employers to reach you
- **SEARCH** and apply to hundreds of fresh jobs on the spot with robust filters
- **SET UP** efficient job alerts to deliver the latest jobs right to your inbox
- **ASK** the experts advice, get resume writing tips, utilize career assessment test services, and more

## RECENTLY LISTED OPPORTUNITIES

- [Neuro-Oncology Faculty Opportunity](#) | UTMB – Galveston, TX
- [Neuropsychology Clinical Faculty Opportunity](#) | UTMB – Galveston, TX
- [General Neurology Faculty](#) | University of Michigan – Ann Arbor, MI
- [Physician, Cognitive Neurologist - Full Academic](#) | Ochsner LSU Health – Shreveport, LA
- [Physician, Neuromuscular Neurologist - Full Academic](#) | Ochsner LSU Health – Shreveport, LA
- [Neuro-Ophthalmology Faculty Position](#) | Johns Hopkins University – Baltimore, MD
- [General Neurologist](#) | Penn State Health – Hershey, PA
- [General Neurologist](#) | Tufts Medicine – Boston, MA
- [Neuro-Oncology Fellowship](#) | University of Pittsburgh Medical Center – Pittsburgh, PA
- [Child Neurologist/Neurogenetic Physician Scientist](#) | Stanford University – Stanford, CA
- [General and Subspecialty Neurologist](#) | University of Pittsburgh Medical Center – Pittsburgh, PA
- [2026 Epilepsy Fellowship - Adult Track](#) | Baylor College of Medicine – Houston, TX

Mount Sinai Health System and the Icahn School of Medicine at Mount Sinai in New York City are seeking a [System Chair of Neurology](#) to lead one of the nation's most prominent



neurology departments. This is a prestigious opportunity for an accomplished, academically driven physician leader to guide the department's clinical, research, and educational missions within one of the largest and most innovative academic health systems in the country.

The Chair will provide visionary leadership across Mount Sinai's expansive network, overseeing faculty development, education, research, clinical excellence, and philanthropy while advancing collaboration through the Health System's integrated Institute model. The role includes fostering translational and clinical research, strengthening training programs, and ensuring the highest standards of patient care.

Candidates must hold an MD (or equivalent), be board certified in neurology, and qualify for appointment as Professor at the Icahn School of Medicine at Mount Sinai.

[View All Jobs](#) | [Upload Your CV](#)

## WELCOME NEW ANA MEMBERS

Join us in welcoming the newest members of the ANA!



### FELLOW

Jee Bang, MD, FANA  
Jaime Grutzendler, MD, FANA  
Dan Hanley, MD, FANA  
Ryan Jacobson, MD, FANA  
Jenny Linnoila, MD, PhD, FANA

### STUDENT, *continued...*

Ciara Chabi-Anderson  
Odette Chirinos  
Shriya Deshpande, MS  
Mark Meynier Dupaquier  
Neethu Edathara

Nicolas Phielipp, MD, FANA  
Eric S. Rosenthal, MD, FANA  
Jay Salpekar, MD, FANA  
Jose I. Suarez, MD, FANA  
Kyrana Tsapkini, PhD, FANA  
Wendy Ziai, MD, MPH, FANA

#### **MEMBER**

Xuemei Cai, MD  
Andre Catalano, PharmD, MBA  
Silvia Koton, PhD  
Rujuta Bhatt Wilson, MD, MS  
Subhendu Bhattacharya, DSc  
Shubham Dubey, MD, DM

#### **ASSOCIATE**

Anna Bacchetti, MD  
Gabriela Garofalo, MD  
Fareed Khan, MD  
Hancheng Mao, PhD  
Nafiza Martini, MD  
Morad Morad, MD  
Savvina Prapiadou, MD  
Navideh Sahebi Vaighan, MD  
Vincent Shieh, MD  
Abdul Jaber Tayem, MD  
Sarah Vogel, MD

#### **INDUSTRY LIAISON**

Simon Li, PhD  
Rosie Moore  
Xiang Ni, MD  
Michael Sangobowale, PhD

#### **STUDENT**

Amit Ahituv  
Lana Al Doori  
Rofida Mohamed Agour  
Eshan Ahmed  
Joseph Steven Ritualo Alisch  
Melissa Andolfato  
Shannon Arnold  
Merve Atik, MD  
Leena Attyani  
Rahm Jai Bakshi  
Andrea Camila Ballesteros  
Vedanshi Bhargava  
Muhammad Arham Bin Kashif,  
MBBS  
Eli Blaney  
Ryan Bowen  
Erica Michelle Breyman

Eliyahu Freund  
Mabel Frimpong  
Richard Hong Fu  
Hilena Gebrekidan Gebre  
Anjali Goyal  
Zayd Hashem, MD  
Samuel Hornstein  
Justin Ka Huynh  
Selin Isguven Billmyer  
Olivia Jenks  
Joshua A. Jolton  
Megana Kasavaraju  
Harlin Kaur  
Kourtney Kelly  
Hiba Khan  
Alana Jasmine Lashley, MS  
Jacob Lewis  
Austin Guo Li, MEng  
Oliver Li, MD  
Fernanda Marceliano  
Karolin Markarian  
Makenzie Maroney  
Mahima Mishra, PhD  
Nico Modesti  
Bekri Mohammed, MD  
Cameron Mortazavi  
Neha Muraly  
Gavin Nichols  
Joshua Michael Polgar, MS  
Shahraz Qamar  
Kerry Qualter  
Milan Quinn  
Neha Reddy  
Giuliana Sardi Rogines  
Manav Shardha  
Keshav Srivaths  
Jason Sriwijaya  
Pearl A. Sutter  
Kim Ngan Le Tat  
Heather S. Thomas, MBA  
Javier Zuriel Valderrama Colunga,  
MD  
Christina Valera, MS  
Andrew Vallejos  
Ellis Vanotoo  
Zachary Vazquez  
Apoorva Vedula  
Nikhil Vj  
Trinh Daniel Vu  
Robert Williams  
Marina Yassa  
Angela Yen

**ARE YOU BURSTING WITH PRIDE?**

## *Share Your Achievements with the ANA!*

ANA members are known for their accomplishments, and we want to hear about yours. Please let us know about your professional achievements, accolades, publications, etc., so we can share your exciting news with our community.

## SHARE YOUR NEWS



American Neurological Association  
921 Pleasant Valley Avenue, #495  
Mount Laurel, NJ 08054  
(609) 596-2223 | [www.myana.org](http://www.myana.org)

[UNSUBSCRIBE](#)

American Neurological Association | 921 Pleasant Valley Avenue, #495 | Mount Laurel, NJ 08054 US

[Unsubscribe](#) | [Constant Contact Data Notice](#)