



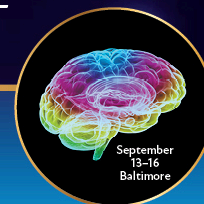
PRESIDENT'S MESSAGE

Dear ANA Members,

It was 150 years ago this month that the ANA hosted its first Annual Meeting on June 2-4, 1875, at the YMCA Hall on the corner of Fourth and Twenty-third Street in New York City. During that meeting, a constitution and bylaws were adopted, and the very first slate of officers was elected. This year, we will host [ANA2025](#) from September 13-16, 2025, in Baltimore. I hope you can join us for an outstanding meeting that reflects our mission to advance science, education, and careers to improve neurologic health for all.

ANA2025 ✨
150th ANNUAL MEETING
#ANA2025 | 2025.myana.org

REGISTER TODAY!
EARLY BIRD REGISTRATION DEADLINE
AUGUST 6, 2025



Each year we recognize the exciting work of the annually selected ANA Award winners. Please join me in congratulating those who will be recognized during ANA2025:

- Beau Ances, MD, PhD, MSc, FANA, Washington University in St. Louis *Raymond D. Adams Lectureship*
- Matthew Brier, MD, PhD, Washington University in St. Louis *The Grass Foundation – ANA Award in Neuroscience*
- Michael Coleman, PhD, Cambridge University *Wolfe Research Prize*
- Merit Cudkowicz, MD, MSC, FANA, Massachusetts General Hospital *ANA Awards for Excellence | Clinical and Scientific Excellence (>15 years)*
- Divyanshu Dubey, MD, FANA, Mayo Clinic *Derek Denny-Brown Young Neurological Scholar Award, Clinical*
- Eva Feldman, MD, PhD, FANA, University of Michigan *ANA Awards for Excellence | Clinical and Scientific Excellence (>15 years)*
- Kathryn Fitzgerald, ScD, Johns Hopkins University School of Medicine *Derek Denny-Brown Young Neurological Scholar Award, Neuroscientist*

- Ethan Goldberg, MD, PhD, Children's Hospital of Philadelphia *Derek Denny-Brown Young Neurological Scholar Award, Basic Science*
- Andrea Gropman, MD, FANA, St. Jude Children's Research Hospital *Soriano Lectureship Award*
- Brandon Holmes, MD, PhD, University of California San Francisco *ANA Rising Star Award*
- Aimee Kao, MD, PhD, FANA, University of California San Francisco *ANA Awards for Excellence | Clinical and Scientific Excellence (<15 years)*
- Joseph Safdieh, MD, FANA, Weill Cornell Medical College *Distinguished Neurology Educator Award*
- Bryan Traynor, MB, MD, PhD, MMSc, FRCPI, FANA, National Institutes of Health *F.E. Bennett Memorial Lectureship Award*

You are invited to the ANA2025 Presidential Symposium



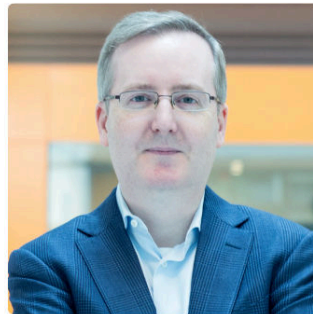
M. Elizabeth Ross, MD, PhD, FANA
ANA President



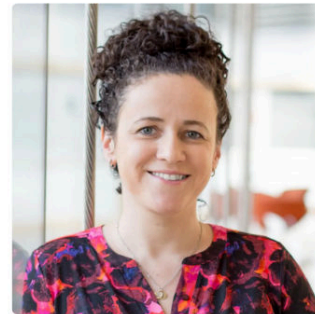
Gemma Carvill, PhD



Josh Peterson, MD, MPH



Bryan Traynor, MD, PhD, FANA



Olga Troyanskaya, PhD

In Baltimore, we will celebrate the outstanding research and careers of the award winners during ANA2025. [Register](#) today and enjoy early registration rates that are good through August 6, 2025. If you are able to join us in Baltimore, I would like to personally invite you to attend the Presidential Symposium, [Decoding Neurological Risk: Transforming Care with Polygenic Risk Scores](#), on Sunday, September 14, from 1-3 PM ET. I am grateful to my colleague, Gemma Carville, PhD, who will co-chair this plenary session with me, and Josh Peterson, MD, MPH, Bryan Traynor, MD, PhD, FANA, and Olga Troyanskaya, PhD, who will also be speaking. This session will explore the present and near future status of applications for polygenic risk scores in precision neurological diagnosis and care.

ANA2025 ✨
150th ANNUAL MEETING

**EXECUTIVE SESSION
OF MEMBERSHIP**

Monday, September 15
10:50 AM – 11:45 AM EDT



Another highlight of the ANA Annual Meeting is the Executive Session of Membership. During this meeting, members are updated on the strategic goals, achievements, financial standings, and work of the ANA. It is during this session that the Slate of Candidates for Executive Committee and board service is adopted by membership. We invite all members of the ANA to attend this important session.

All ANA members are invited to attend this year's President's Reception on Monday evening, September 15, at the [The National Aquarium](#). This is an ideal location for celebrating the ANA's 150 years of excellence in academic neurology and neuroscience. We will also take the opportunity to celebrate the 75th Anniversary of NINDS and its over 7 decades of partnership with ANA to advance neurological research, care, and education of the next generation of academic neurologists and translational investigators. The President's Reception is open to all registered attendees of the Annual Meeting. During this reception, it will be an honor to pass the baton to my colleague, Dimitri Krainc, MD, PhD, FANA, of Northwestern University, who will become the next President of the ANA. I look forward to continued work with Dimitri as I take on the role of Immediate Past President and to continue our joint efforts for building important coalitions for the ANA that will expand our reach and support of our members. It is also important to emphasize the many contributions of Dr. Frances Jensen, the current Immediate Past President, who has been a central part of these efforts and whose invaluable input will be needed as we increase engagement with other professional organizations whose values and missions resonate with ANA.



The ANA Annual Meeting is packed with [outstanding education and networking opportunities](#), not least of which is our connection with the [Association of University Professors of Neurology](#) (AUPN) as they host their [annual meeting](#) on the Saturday leading into ANA2025. If you would like additional opportunities to learn, connect, and grow, consider registering for the AUPN Annual Meeting so you can get two great meetings while only traveling once.



In June, we are in the midst of planning for the coming membership year. The [Call for Committee service](#) is open now through June 30, 2025, 11:59 PM PDT. If you would like to serve on an ANA committee and help us design programs and resources for ANA members, please complete the [Call for Committee Service form](#). You can learn more about ANA committees on the [ANA website](#) to determine which committee would be a good fit for you. Committee participation is an important way to gain leadership experience, connect with other ANA members, and help us continually improve our programs and resources by serving on an ANA committee.

GRANT TO
ACTIVATE
GLOBAL
ENGAGEMENT

Strengthen Your
Community with
GAGE
OPEN TO LMIC-BASED
NEUROLOGY ORGANIZATIONS



We look forward to once again offering the [Grant to Activate Global Engagement \(GAGE\)](#) that will support educational and/or research meetings in [low- and middle-income countries \(LMICs\)](#). This exciting opportunity is open to all LMIC neurology and neuroscience organizations (e.g. associations, societies, non-governmental organizations, etc.) and higher education institutions. The GAGE has empowered neurologists and neuroscientists worldwide to host impactful events. Programs supported by the GAGE have strengthened neuroscience collaboration and support, advanced local research, and enhanced global partnerships in neurology. The ANA awards up to four (4) grants of \$2,000 USD each to organizations or institutions to support educational activities that highlight local research. Learn more and submit your grant application on or before July 23, 2025.

I look forward to celebrating with everyone at ANA2025 as we recognize the ANA's 150th anniversary and share the latest research and science in academic neurology. Register today and make your travel plans – see you in Baltimore!

Sincerely,

M. Elizabeth Ross, MD, PhD, FANA
President, ANA
Nathan Cummings Professor and
Head, Laboratory of Neurogenetics and Development
Director, Center for Neurogenetics
Weill Cornell Medicine



Conversations from the world of academic
neurology and neuroscience.

DISCOVER THE ANA'S
LATEST PODCAST!

ANA INVESTIGATES NEW GUIDELINES FOR RLS TREATMENT

Listen to the latest episode of ANA Investigates: [Restless Leg Syndrome!](#) Tune in as Dr. Kara J. Wyant, Clinical Assistant Professor of Neurology at the University of Michigan Medical School, joins Dr. John Winkelman, Professor of Psychiatry at Harvard Medical School and Chief of the Sleep Disorders Clinical Research Program at Massachusetts General Hospital, to discuss new clinical guidelines for restless leg syndrome (RLS). Together, they explore how shifting treatment recommendations—away from dopamine agonists and toward iron evaluation, alpha-2-delta ligands, and in some cases, opioids—can improve outcomes for patients with this common movement and sleep disorder.

Catch up on previous [ANA Investigates](#) episodes anytime, including the recent compelling discussion on [The Neural Exposome](#). Keep an eye out for the next episode in the series centered on Vector-Borne Illness dropping this Tuesday, June 24!

CELEBRATING 75 YEARS OF SCIENTIFIC DISCOVERY AND INNOVATION: NINDS 75TH ANNIVERSARY CONGRESSIONAL BRIEFING & RECEPTION

Join the ANA for a special congressional briefing and reception celebrating the 75th anniversary of the National Institute of Neurological Disorders and Stroke (NINDS) – a leading force in neuroscience research and a cornerstone of biomedical innovation in the United States. This event will spotlight the extraordinary scientific advancements made possible by NINDS over the past 75 years – from foundational discoveries in brain function to life-changing therapies for neurological diseases. A reception will follow the briefing, offering an opportunity for congressional staff, policymakers, advocates, and stakeholders to connect and celebrate the vital role of public investment in neuroscience.



The NINDS 75th Anniversary Congressional Briefing & Reception will take place on Tuesday, June 24, 2025, from 3:30 to 5:00 PM EDT in Room 1539 of the Longworth House Office Building on Capitol Hill, Washington, DC. Snacks and refreshments will be provided. [RSVP is required to attend.](#)

Annals of
NEUROLOGY

An Official Journal of the
American Neurological
Association & the
Child Neurology Society



ANA JOURNAL HIGHLIGHTS

Gain inspiration and insight from ANA member articles in the [Annals of Neurology](#):

- [The Relationship between Rest Tremor and Underlying Lewy Pathology in Essential Tremor: A Clinical-Pathological Study of 201 Cases](#)
- [Intravenous Glyburide in Medical and Endovascular-Treated Large-Core Stroke: A Subgroup Analysis of the CHARM Randomized Clinical Trial](#)
- [New Horizons for Multiple Sclerosis Therapy: 2025 and Beyond](#)
- [Autosomal Recessive Cerebellar Ataxias: Translating Genes to Therapies](#)

- [AI in Neurology: Everything, Everywhere, all at Once PART 2: Speech, Sentience, Scruples, and Service](#)

DID YOU KNOW? ANNALS OFFERS ANA FELLOWS ONE GUARANTEED EXTERNAL REVIEW PER YEAR!

Annals of Neurology is one of the world's most prestigious medical publications, featuring high-impact clinical and basic research in neurology and neuroscience. With an Impact Factor of 8.1, *Annals* has a long-standing reputation for excellence and is widely recognized by leaders in the field.

As an ANA Fellow, you are entitled to one external review per year for a manuscript submitted to *Annals*. If you are the first, senior, or corresponding author, you will have the option to request this guaranteed review during submission. Be sure your [membership is current](#) to take advantage of this [exclusive benefit](#)!



ACHIEVE MAXIMUM EXPOSURE!

Send your job opportunities directly to the inboxes of over 400+ neurologists and healthcare professionals with the exclusive Job Flash™ Email.



ANA CAREER CENTER: CONNECTING EMPLOYERS & JOB SEEKERS

Are you an [employer](#) recruiting for an open position? Are you an [individual seeking employment](#) to fit your skills, experience, and talent? The [ANA Career Center](#) is an outstanding resource for both employers and job seekers.

EMPLOYERS

- **EMAIL** your job directly to job seeking professionals
- **PLACE** your job in front of our highly qualified members
- **SEARCH** our resume database of qualified candidates
- **MANAGE** jobs and applicant activity right on our site
- **LIMIT** applicants only to those who are qualified
- **FILL** your jobs more quickly with great talent

JOB SEEKERS

- **POST** multiple resumes and cover letters or choose an anonymous career profile that leads employers to reach you
- **SEARCH** and apply to hundreds of fresh jobs on the spot with robust filters
- **SET UP** efficient job alerts to deliver the latest jobs right to your inbox
- **ASK** the experts advice, get resume writing tips, utilize career assessment test services, and more

RECENTLY LISTED OPPORTUNITIES

- [Cognitive Neurologist, Clinical Director](#) | NYU Langone Health - New York, NY
- [Movement Disorder Neurologist](#) | UMass Memorial Medical Group - Worcester, MA
- [Neuro-Critical Care Faculty Opportunity](#) | Texas Tech University Health Sciences Center - El Paso, TX
- [Pediatric Neurologist](#) | UMass Memorial Health - Worcester, MA
- [Academic Neurologist - Epileptologist](#) | UMass Memorial Medical Group - Worcester, MA
- [Behavioral Neurologist](#) | AdventHealth Neuroscience - Orlando, FL
- [BE/BC Movement Disorder Neurologist](#) | Hackensack Meridian Health - Hackensack, NJ
- [Adult Neurologist](#) | Northern Light Eastern Maine Medical Center - Bangor, ME
- [Medical Director Neurosurgery](#) | Cleveland Clinic - Lakeland, FL
- [Physician Neurologist](#) | Watson Clinic - Lakeland, FL
- [General Neurologists](#) | Cleveland Clinic - Weston, FL
- [Movement Disorder Faculty Position](#) | Albany Medical Center - Albany, NY
- [Cognitive Neurologist](#) | Albany Medical Center - Albany, NY
- [Neurologist/Specialty Neurologist](#) | Capital Health - New Jersey

[View All Jobs](#) | [Upload Your CV](#)

WELCOME NEW ANA MEMBERS

Join us in welcoming the newest members of the ANA!



FELLOW

Prachi Mehndiratta, MBBS

INDUSTRY LIAISON

Yusuff Abdu, PhD
Chandler Robinson, MD, MBA, MSc

MEMBER

STUDENT, *continued...*

Luana Gola Alves, MD
Alejandra Mercedes Gutierrez
Mathias Holsey Gramkow, MD
Mano Harshadan
Haven Helton Thien Huynh
Muhammad Mashood Iqbal
Dhanashree Kishor Jagtap

Saeedeh Azary, MD, MPH
Panagiotis Kassavetis, MD, PhD
Meghna Rajaprakash, MD, MSc
Lakshmi Shankar, MD, MS
Laveena Singla, MD
Anna Szekely, MD
April Gayle Malin, Taclabao, MD

ASSOCIATE

George Abaji, MD
Shawn Barton, MD, PhD
Nicholas Karagas, MD, PhD
Siddhanth Mekala, MD
Mehriban Sariyeva, MD
Xiuli Yang, MD, PhD

STUDENT

Paula Abola, MSc
Edwin Akomaning, MS
Maryam Alamer
Mousa Almasalma
Mohamed Abd Naceur Ammar
Joannes Luke Bognot Asis, BS
Maria Isabella Bonilla
Cooper Brett, MS
Maddison Cooper, BS
Natalie David, BS
Madeline Eisenfeld, BS

Shradha Pandurang Kakde, MBBS
Abhinav Kaushik, BSc
Wania Khalid, MBBS
Mezhgan Kiwan, MBBS
Karen Kikuta, BS
Stephanie Ko
Kyoko Kohno, BA
Patrick Daniel Lawhon
Lauren Littig, BA
Harshini Matada
Xiomara McDonald
Zvikomborero Murimbechi, MS
Saman Naz
Marissa Orosco
Ramneek Pandher
Sabrina Phanor, MPhil, MA
Mariela M. Rosas González, BS
Ahmad Sanan
Karan Sharma, MS
Kushagra Sharma
Ayesha Sohail
Gaurav Sudhir, MBBS
Kaan Toprak
Jessica Mae Urbanczyk, BS
Sahana Vinothachandran, MD
Courtney Weglein, MEd
H.R. Sagara Wijeratne
Hossam Youssef, MBBS

ARE YOU BURSTING WITH PRIDE?

Share Your Achievements with the ANA!

ANA members are known for their accomplishments, and we want to hear about yours! Please let us know about your professional achievements, accolades, publications, etc., so we can share your exciting news with our community.

SHARE YOUR NEWS



American Neurological Association
921 Pleasant Valley Avenue, #495
Mount Laurel, NJ 08054
(609) 596-2223 | www.myana.org

[UNSUBSCRIBE](#)

American Neurological Association
921 Pleasant Valley Avenue, #495
Mount Laurel, NJ 08054 US

[Unsubscribe](#) | [Constant Contact Data Notice](#)