



PRESIDENT'S MESSAGE

Dear ANA Members,

Many thanks to all who contributed to a wonderful Annual Meeting in Orlando, where we shared exciting advances in cutting edge neurological sciences and connected with new and old friends. Planning is already underway for ANA2025 that will be held September 13 – 16, 2025, in Baltimore, Maryland. Do mark the dates on your calendar and make plans to attend. The ANA will be honoring its 150-year anniversary in 2025, made even more special by the joint celebration of the 75th anniversary of the National Institute of Neurological Disorders and Stroke (NINDS).

ANA 2025 * 150th ANNUAL MEETING



September 13-16
Baltimore, MD



One of the first areas of focus for the [Annual Meeting Programming \(AMP\) Committee](#) is to invite ideas for topics to be offered at ANA2025. The Call for Topics is open now through Friday, November 1, 2024, 11:59 PM PDT. We invite you to submit your suggestions for a plenary, professional development, or interactive lunch workshop session.

If you have not already done so, please be sure to provide evaluation information about ANA2024. Your feedback is an essential part of the planning process for 2025. To complete the evaluation and claim CME, please navigate to [ANA's OnDEC system](#). Be sure to complete the [meeting evaluation](#) on or before November 3, 2024, and you will be automatically entered to win a \$100 Starbucks gift card! *Note, you must claim CME for ANA2024 before December 31, 2024.*

In case you were not able to join us or if you wish to continue enjoying some of the meeting, the [ANA2024 Meeting Recordings package](#) is available. This year's package includes recordings of the six main symposia. For members or non-members who did not purchase a full meeting package, the meeting recordings are available for

purchase. Members may purchase the package for \$50, and non-members may purchase the package for \$99.

VOTE TODAY!

During ANA2024, we hosted the Executive Session of Membership meeting. During the meeting, we shared a proposal from the ANA Board of Directors to amend the ANA bylaws. The amendments include:

- Updating the Treasurer's role to include being chair of the Finance Committee
- Updating the Audit Committee to the Finance Committee
- Removing the Government and Nonprofit Special Advisory Member type
- Adding Affiliate Member as a new member type

You may review the [current ANA bylaws](#) (last updated in October 2022) and a [document containing the proposed changes](#). After review, please [cast your vote](#) to ACCEPT or REJECT the proposed changes. **Voting will be open until October 23, 2024.**

The graphic features a dark blue background with a light blue grid. A world map is faintly visible in the background. Overlaid on the map is a network of white lines connecting various circular icons of diverse people. The text 'ANA Global Neurology' is in white, with 'VIRTUAL SYMPOSIUM' in light blue below it. At the bottom left, 'December 2-3, 2024' is written in orange. At the bottom right is the ANA logo, which includes the letters 'ANA' in a stylized font and the full name 'AMERICAN NEUROLOGICAL ASSOCIATION' with the tagline 'INNOVATORS IN DISCOVERY, EDUCATION, AND CARE' below it.

Another exciting meeting coming in December is the ANA Global Neurology Virtual Symposium. The [ANA Global Engagement Committee](#) has an outstanding educational lineup prepared for the inaugural ANA Global Neurology Virtual Symposium being held December 2 – 3, 2024. [Registration](#) for this event is now open.

On Day One of the program, all ANA members are invited to attend. This day will feature a keynote address by Dr. Tarun Dua along with early career researcher presentations. Day Two is reserved for ANA members from low- and middle-income countries (LMICs) as it will feature programming on research, writing, and funding in limited resource settings.



The **American Neurological Association**

is the home of academic neurology, and we hope you will be part of our community.



The ANA will soon be launching the membership renewal cycle for 2025. I encourage you to renew as soon as you receive your 2025 invoice and please invite a colleague who is not currently a member to [join](#). The ANA is the place for academic neurologists and neuroscientists. We offer educational programming, prestigious journals, opportunities to connect and engage with experts and leaders in academic neurology, awards, scholarships, the [ANA Career Center](#), mentorship, and much more.

The Association highly values its diverse membership representing the breadth and depth of academic neurology. So, whatever your neuro-subspecialty, research area, career level, geographic location, or lived experience, the ANA is your academic home. I encourage you to renew your membership and spread the word to those in your network that they should join the ANA community as well.

Sincerely,

A handwritten signature in black ink that reads "M. Elizabeth Ross". The signature is written in a cursive, flowing style.

M. Elizabeth Ross, MD, PhD, FANA
President, ANA
Nathan Cummings Professor and
Head, Laboratory of Neurogenetics and Development
Director, Center for Neurogenetics
Weill Cornell Medicine



ANA INVESTIGATES THE GLYMPHATIC SYSTEM AND NEURODEGENERATIVE DISEASES PODCAST COMING SOON!

The ANA will release the first podcast of the new season, ANA Investigates the Glymphatic System and Neurodegenerative Diseases, on October 29! Get ready to listen in as Dr. Daniel Claassen of Vanderbilt University is interviewed by Dr. Cheran Elangoven of University of Tennessee to learn more about the glymphatic system.



**IDEAS
COMMITTEE**
INCLUSION • DIVERSITY • EQUITY
ANTI-RACISM • SOCIAL JUSTICE

RECRUITMENT SUGGESTIONS

for Academic Neurology Programs

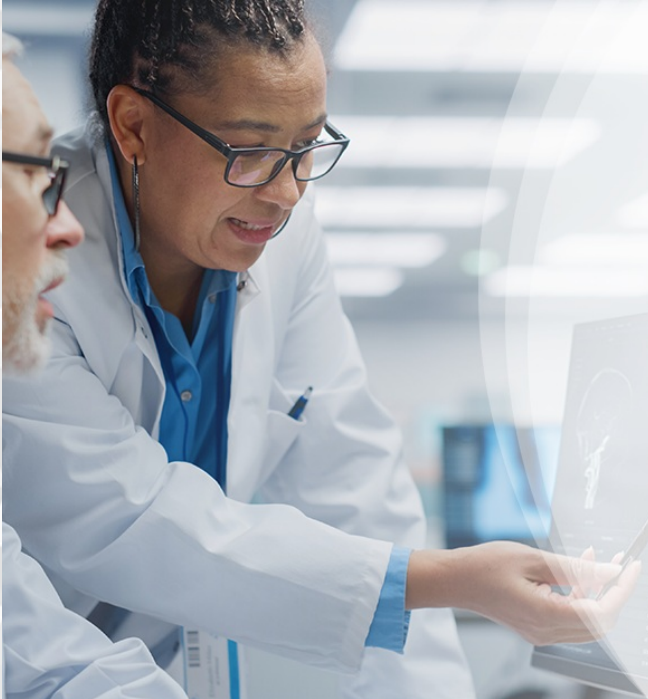
ANA IDEAS COMMITTEE SHARES RECRUITMENT TIPS

The ANA Inclusion/Diversity/Equity/Anti-Racism/Social Justice (IDEAS) Committee has developed a [recruitment strategies resource](#) for members to utilize when recruiting talent for open positions in academic neurology programs. This resource provides insight to support recruiting teams in their efforts to promote IDEAS in their hiring strategies.



ANA SPEAKER DATABASE SUPPORTS MEMBERS AND PROMOTES DIVERSITY

The ANA celebrates diversity through its [speaker database](#). The database is designed for ANA members only, so you will need to be logged in to access it. The icon for the Speaker Directory is on the Member Center page. Individuals have provided their information allowing you to identify those who might speak or present on a specific topic. The database includes information to help identify individuals who are underrepresented in medicine (URiM) and who identify as women. We invite you to visit the speaker database if you are in need of a presenter. Please note that all ANA members are welcome to opt in and be included in the database by completing the online form [here](#).



Achieve Maximum Exposure!

Send your jobs directly to the inboxes of top neurology professionals with the exclusive Job Flash™ email.

ANA CAREER CENTER IS A RESOURCE FOR EMPLOYERS AND JOB SEEKERS

Are you an [employer](#) recruiting for an open position? Are you an [individual seeking employment](#) to fit your skills, experience, and talent? The [ANA Career Center](#) is an outstanding resource for both employers and job seekers.

EMPLOYERS

- **EMAIL** your job directly to job seeking professionals
- **PLACE** your job in front of our highly qualified members
- **SEARCH** our resume database of qualified candidates
- **MANAGE** jobs and applicant activity right on our site
- **LIMIT** applicants only to those who are qualified
- **FILL** your jobs more quickly with great talent

JOB SEEKERS

- **POST** multiple resumes and cover letters or choose an anonymous career profile that leads employers to reach you
- **SEARCH** and apply to hundreds of fresh jobs on the spot with robust filters
- **SET UP** efficient job alerts to deliver the latest jobs right to your inbox
- **ASK** the experts advice, get resume writing tips, utilize career assessment test services, and more

RECENTLY LISTED OPPORTUNITIES

- [Neurology Physician](#) | LifePoint Health - Marquette, MI
- [Registered Nurse \(RN\) - Neuro-Oncology](#) | Ochsner Health - New Orleans, LA
- [Behavioral Neurologist](#) | Northwestern University - Chicago, IL
- [Clinical Research Assistant, Department of Pediatrics/ Department of Neurology](#) | Virginia Commonwealth University - Richmond, VA
- [Neurologist, Neuromuscular or Neurophysiologist](#) | UPMC Neuroscience Institute - Harrisburg, PA
- [Adult Epileptologist](#) | Northeast Regional Epilepsy Group - New Brunswick, NJ
- [Pediatric Neurologist](#) | UnitedHealth Group - Poughkeepsie, NY
- [Advanced Practice Clinician, Stroke Program](#) | Atlantic Health System - Summit, NJ
- [Registered Nurse - Neuro ICU - Nights](#) | Ochsner Health - New Orleans, LA

- [Neuro-Ophthalmologist](#) | CarleHealth - Urbana, IL
- [Neurologist](#) | Sutter East Bay Medical Group - Antioch, CA
- [Autonomic Neurologist - SOM/Neurology](#) | Virginia Commonwealth University - Richmond, VA

[View All Jobs](#) | [Upload Your CV](#)

TUFTS MEDICAL CENTER AND TUFTS UNIVERSITY SEEKS CHAIR OF NEUROLOGY



Tufts Medical Center and Tufts University School of Medicine in Boston, Massachusetts, are seeking a [Chair of Neurology](#) to lead the three missions of patient care, research and education for our neurology department and to serve as the academic leader across the hospital network. This Chair will play a pivotal leadership role in growing and shaping the strategy and operations of our newly created system-wide Neurosciences Service Line. The Tufts Medical Center Neurology Chair reports directly to the Dean/Chief Academic Officer and President of the Faculty Practice.

Annals of
NEUROLOGY

An Official Journal of
the American Neurological
Association and the
Child Neurology Society



AMERICAN
NEUROLOGICAL
ASSOCIATION



ANA JOURNAL HIGHLIGHTS

Be inspired and informed by articles authored by ANA members and published in the [Annals of Neurology](#).

- [An Approach to Successful Development of Clinician–Scientists in Neurology: The NINDS R25 Experience](#)
- [Factors Affecting Resilience and Prevention of Alzheimer's Disease and Related Dementias](#)
- [COMBAT-MS: A Population-Based Observational Cohort Study Addressing the Benefit–Risk Balance of Multiple Sclerosis Therapies Compared with Rituximab](#)
- [Laser Ablation of Periventricular Nodular Heterotopia for Medically Refractory Epilepsy](#)
- [Survey of the Landscape of Society Practice Guidelines for Genetic Testing of Neurodevelopmental Disorders](#)
- [Reply to “Comprehensive Analysis of Sex Differences in Amyotrophic Lateral Sclerosis Prognosis and Disease Progression”](#)

ANNALS OF NEUROLOGY OFFERS ONE GUARANTEED EXTERNAL REVIEW FOR ANA FELLOWS EACH CALENDAR YEAR

Annals of Neurology is one of the most prestigious medical publications in the world, publishing high-impact clinical and basic research in neurology and neuroscience. With an Impact Factor of 11.274, *Annals* has a long history of a commitment to outstanding neuroscience and is recognized by and among leaders in the field.

Did you know ANA Fellow members get one guaranteed external review per calendar year? In addition, Fellow members of the ANA are guaranteed an external review of one manuscript per year submitted to *Annals*. Be sure your [membership is current](#) to take advantage of this member benefit. If you are the first, senior, or corresponding author on a manuscript submitted to *Annals*, you will be asked whether you would like the submitted paper to receive a guaranteed review. Learn more about this benefit [here](#).

WELCOME NEW ANA MEMBERS

We are glad to welcome new members to the ANA!



FELLOW

Vanja Douglas, MD, FANA
Anli Liu, MD, MA, FANA
Stephen Wandera, PhD, FANA

MEMBER

Christoper Alarcón Ruiz, MD, MSc
Hyunjin Kim, MD, PhD
Shivakrishna Kovi, MBBS, MD
Ozoda Ravupova, MS
Arantxa Sanchez Boluarte, MD, MPH

STUDENT

Rawan Abdalla
Judy Abdou
Zain Abidin, MD
Kenneth Adames Ramos
Muhammad Ahmed
Taheea Ahmed
Balnur Bolegenova
Tyler Borko, BA
Ana Dextre Arenas
Steven Everett, MS
Emily Fontan
Sevi Gedikoglu
Haitham Hazaimeh
Audrey Huang, BS
Ayesha Khalid
Alena Khalil, MS

ASSOCIATE

Yasaman Adibnia
Steven Bieser
Martha Finch
McKinnon (Mac) Garrett
Priya Sharma
Kristina Shkirkova, PhD
Shizuka Tomatsu

SENIOR

Kenneth Jordan, MD

STUDENTS, *continued...*

Ahmed Khan
Katherine Kozlowski, BS
Vishal Kumar, MS
Camille Marangi, BS
Christopher Mugabo, MBChB, MMed
Duane Nguyen, BA
Sorwer Alam Parvez, PhD
Rafael Rivera Sotomayor, MD
Tanisha Sanganeria
Matthew Shaker
Sydney Talmi, ScM
Swathi Tata, BS
Arda Tinazlı
Malaika Vardag
Erick Villarreal
Marina Vygonskaya, MD, PhD

ARE YOU BURSTING WITH PRIDE?

Share Your Achievements with the ANA

ANA members are known for their accomplishments, and we want to hear about yours! Please let us know about your professional achievements, accolades, publications, etc., so we can share your exciting news with our community.

SHARE YOUR NEWS



American Neurological Association
1120 Route 73, Suite 200
Mount Laurel, NJ 08054
(856) 380-6892 | www.myana.org

[UNSUBSCRIBE](#)

American Neurological Association | 1120 Route 73, Suite 200 | Mount Laurel, NJ 08054 US

[Unsubscribe](#) | [Update Profile](#) | [Constant Contact Data Notice](#)